

# ROCK HILL RECYCLING & SOLID WASTE

Reference Guide



**ROCK HILL**  
SOUTH CAROLINA

*Always on.*

## Curbside Service

# GARBAGE

The Sanitation Division provides weekly residential recycling, yard waste and garbage collection services. Roll carts and bins should be placed curbside by 7 AM on your scheduled collection day. Green and brown carts and blue bins are collected on the same day. All carts and bins should be removed from the curb by 7 AM the next day.

Extra garbage can be taken to any York County Collection & Recycling Center or an additional roll cart can be purchased for \$50 (can be paid in installments). An additional collection fee (50 percent greater than the usual fee) will be assessed each month. There is no charge to use additional blue recycling bins and it reduces the volume of debris in the roll cart.

Backyard garbage service is available to elderly and disabled residents if no one else in the household is able to move the roll cart. A physician's verification is required for this service. No additional fees apply to provide backyard service. To apply for backyard service, complete the Backyard Garbage Application form at [cityofrockhill.com/publicworks](http://cityofrockhill.com/publicworks) or call 803-326-3891.

**Not sure of your collection day?** Refer to the Sanitation/ Street Sweeper Schedule link on the City website under Public Works or call Customer Service at **803-325-2500**.

**To report a missed roll cart or recycle bin**, or to order a new roll cart or bin, fill out an online service request or call 803-326-3891.

Residents are responsible for keeping roll carts in sanitary condition.

Roll carts have a 10-year manufacturer's warranty against defects in workmanship. Repairs such as broken lids or replacing wheels will be made at no charge.

## County Collection & Recycling Centers

If you live outside the City limits or in an apartment, you can take recyclable material to any York County Collection & Recycling Center. They are open from 7 AM - 7 PM every day except Wednesday and Sunday.

Materials can be taken to the Centers in clear plastic bags, with glass separated from other recyclables.

York County Collection & Recycling Centers also have specific dates for household hazardous material collection.

For a complete list of what you can bring to the collection center and locations, call 803-628-3181 or visit [yorkcountygov.com/recycle](http://yorkcountygov.com/recycle) for more information.



## TIPS TO ENSURE YOUR GARBAGE IS PICKED UP

Garbage must be bagged and fit inside the **GREEN** roll cart with the lid closed.

- Position cart with the lid closed and facing the street.
- Place cart no more than 6 feet away from the roadway.
- Place cart at least 4 feet from other objects (mailboxes, recycling bins, utility poles, parked cars) to avoid damage from automated truck arm.
- Cart must not contain any bricks, rocks, construction materials, hazardous waste, recyclables or yard debris.

Use your **BLUE** recycle bin to minimize the waste in your roll cart.

- Crush all cartons and boxes before placing them in the cart.
- Pour out all liquids from containers before throwing them in the cart.
- Bagged garbage outside of the container will be removed for an additional fee.

**NOTE:** Collection is provided on all holidays except Thanksgiving and Christmas. Thanksgiving holiday collections are provided on the Friday after Thanksgiving. Collections after Christmas will be publicized each year.

75  
PERCENT  
OF LITTER IS  
RECYCLABLE.

## Curbside

# RECYCLING IS EASY!

Residential recycling is collected in blue bins at the curb on the same day as residential garbage. Place the blue collection bins at least 4 feet away from roll carts to avoid damage by the other collection vehicles.

### Items collected for recycling include:

- **Aluminum and steel cans** (push lids inside the cans)
- **Aluminum foil**
- **Plastic** soda, detergent, and shampoo bottles
- **Plastic motor oil bottles** (emptied with the lids on)
- **Plastic milk jugs**
- **Plastics** labeled #1 through #7 (NO STYROFOAM)
- **Newspaper** (tied securely in bags)
- **Magazines and mail** (tied securely in bags)
- **Chipboard** (cereal boxes, tissue boxes, cracker boxes, shoe boxes, cardboard tubes from paper towels, etc.)
- **Cartons** (juice boxes, milk cartons, egg substitutes, etc.)
- **Composite containers** (chips, frozen juice, etc.)
- **Corrugated cardboard** (stack empty, flattened cardboard next to your curbside recycling bin). **Corrugated Cardboard must be cut down to 2-foot x 2-foot sections.**
- **Glass bottles and jars** (all colors)

Place bins at the curb no sooner than noon the day before collections and remove from the curb by 7 AM the day after collections.

If more space for recycled materials is needed, additional blue bins are available at no charge or residents can request a 95-gallon blue roll cart for \$25 (while supplies last). A set of wheels and a handle for your recycling bin are available upon request. To report a missed pick up or to order a new recycle bin, please fill out an online service request at [www.cityofrockhill.com](http://www.cityofrockhill.com) or contact Customer Service at 803-325-2500.

### Rinse

Please rinse all containers and remove lids from glass and plastic containers and cartons (except used motor oil bottles). Then place both the container and lid in your recycle bin.

### Corrugated Cardboard

Corrugated cardboard materials can still be flattened and taken to red dumpsters at City of Rock Hill Fire Stations for recycling.

### NO Plastic Bags

Plastic bags will no longer be accepted in your curbside bin. Please take them to your local grocery store for recycling.

### NO Styrofoam

Styrofoam materials cannot be recycled. Please bag all Styrofoam and place it in the roll cart for disposal.



Additional materials can be taken any York County Collection and Recycling Center. For information about materials accepted and locations of Centers, go to: [yorkcountygov.com/recycle](http://yorkcountygov.com/recycle)



## Yard Debris YARDCART



The brown YardCart, holds grass clippings and other loose yard debris so automated trucks can pick it up at the curb on your collection day. YardCarts save money and control costs, make our Rock Hill streets more attractive, and keep the storm drain system clear of debris.

The YardCart program is voluntary. If you don't use the YardCart for yard debris, you are responsible for either composting or properly disposing of your yard trimmings. South Carolina state law prevents yard waste from being disposed of in landfills, so it cannot be put in your regular garbage for pick up.



Choose the convenience of the YardCart program! To participate:

Place your order online by submitting an Online Service Request or call the YardCart hotline at 803-326-2462.

The current cost of a YardCart is \$50. You can choose to be billed in ONE payment, or 10 monthly payments of \$5. Additional carts can be purchased for a one-time fee of \$25.

### YES!

#### Throw it in the YardCart:

- Grass Clippings
- Pruned Vegetation
- Trimmings
- Leaves
- Branches
- Garden Waste

### NO!

#### Keep it out of the YardCart:

- Sod/Dirt
- Rocks/Bricks
- Stumps/Logs
- Lumber
- Food Scraps
- Cat Litter/Pet Waste

**Loose yard waste is not collected at the curb except for seasonal leaf collection (November - February) and brush collection (large limbs).**

## November - February SEASONAL LEAF COLLECTION

During November, December and January, the City of Rock Hill will pick up leaves and brush at the curb every other week in all neighborhoods. February collection is by request only by submitting an online service request at [cityofrockhill.com](http://cityofrockhill.com) or by calling 803-325-2500.

- See your scheduled collection weeks at [cityofrockhill.com/leafcollection](http://cityofrockhill.com/leafcollection) or call 803-325-2500.
- Leaves should be raked along the curb (not bagged) and kept separate from brush piles.
- Leaves and brush can always be put into a YardCart for weekly pickup throughout the entire year.
- Keep leaves and brush piles away from obstacles including mailboxes, water meters and hydrants.
- Do not blow leaves into storm drains or put them in creeks. Penalties with fines up to \$1,000 will be enforced.
- Blocking traffic lanes or creating line-of-sight hazards for motorists can result in liabilities to the homeowner.



**There is NO leaf collection on Thanksgiving and weeks of Christmas and New Years.**

## BRUSH COLLECTION

Other than seasonal leaf collection, the only loose yard debris (not in a YardCart) picked up at the curb is large limbs and branches.

- A limit of 2 cubic yards of large yard debris will be picked up each week at no cost (about the size of 2 standard refrigerators).
- The maximum size of any piece of yard debris is 12 feet long and no larger than 6 inches in diameter.
- Place limbs and branches alongside the road, away from obstructions, for pick up on your collection day.
- A fee per cubic yard will be assessed to residents who have more than 2 cubic yards out on their collection day.

**Note: Small piles of trimmings, grass clippings and vegetation will not be picked up loose at the curb.**

## Other Items

# BULKY ITEMS, METAL COLLECTION, ANIMALS

### Bulky Items - No Service Charge

Curbside bulky items such as couches, chairs and furnishings will be collected on the same day as residential garbage. Place bulky items at the curb no earlier than noon the day before pickup and no later than 7 AM the day of pickup. Separate the large items from other curbside collections (away from roll carts and recycling bins) and do not place near yard debris.

### Metal Collection - No Service Charge

Appliances and metal items such as grills, bicycles and basketball goals should be separated from other types of debris. Metal collection is serviced on a call-in basis only. Residents should complete an online service request at [cityofrockhill.com](http://cityofrockhill.com) or contact Customer Service at 803-325-2500 to request metal collection. All metal collected at curbside is recycled.



### Animals

The City picks up dead animals from streets and curbsides. To report a dead animal, complete an online service request or report the location by calling 803-325-2500. York County provides animal control for city residents. Call the County at 803-628-3190.

### Household Construction Debris, Electronics and Tires

#### Service Charges Will Apply

Household construction debris, wood fencing, automotive components, tires, electronics, bricks, rocks, concrete, or dirt **should not** be placed at the curb. These items are not regularly collected and could result in a violation and fee.

Although household construction debris, electronics and tires are not regularly collected at the curb, residents can request pickup for a service charge. The collection fee for electronics and tires is \$25 per item. The collection fee for Household construction debris depends on the type of debris and the amount, but will be a minimum of \$50.

For questions or to schedule a service charge pickup call 803-325-2500.

If you do not want to be charged a collection fee, electronics can be taken to any of the 16 York County Collection and Recycling Centers, or taken to the City of Rock Hill Operations Center, at 757 S. Anderson Road every Wednesday from 7 AM to 3 PM. Household construction debris and remodeling material can be taken to the York County Landfill.



## LITTER PREVENTION

### Great American Clean-up

Volunteers across the country will rally together to improve their local parks, public spaces, waterways, hiking trails, sidewalks and streets by participating in Keep America Beautiful's Great American Cleanup™, the nation's largest annual community improvement program, which will take place March through May. To participate, call 803-329-7027.

### Rock Hill Litter Pickups

Trash is more than an eyesore -- it's hazardous to the health of the environment. Old tires become mosquito breeding grounds. Discarded fishing line can seriously injure fish and birds. Plastic bottles, bags and packaging can pollute our land and water for thousands of years to come.

The City of Rock Hill will provide trash bags and gloves to groups that want to clean up the litter in their neighborhoods, and around their business or schools. We'll even come pick up the bags when you're done! Call 803-329-7027.

Report A Litterbug by calling **877-754-8837**. Report the location, time and vehicle description.

Don't know what to do with it?  
HERE ARE SOME OTHER MATERIALS  
THAT CAN BE RECYCLED.

Metals, plastics and glass from electronic products can be recycled--conserving resources and energy.

### Electronics

Electronics cannot be placed at the curb, but can be recycled at the City Operations Center at 757 S. Anderson Road, every Wednesday from 7 AM to 3 PM or at any York County Collection & Recycling Center. Small appliances with a cord such as toasters, computers, monitors and televisions can be recycled. Major appliances are not accepted.

### Used Motor Oil

Used motor oil, filters and containers may be recycled at the City of Rock Hill Operations Center at 757 S. Anderson Road, every Wednesday from 7 AM to 3 PM.

### Tires

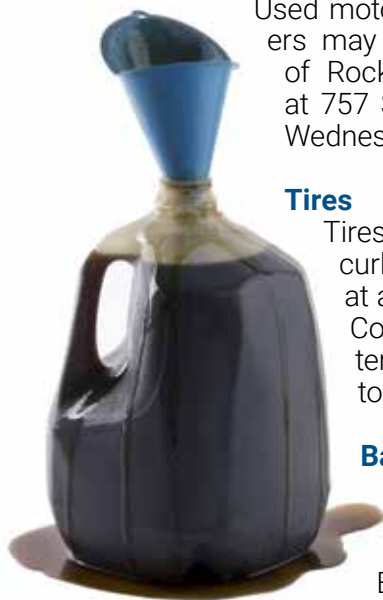
Tires cannot be placed at the curb. Tires can be recycled at any of the 16 York County Collection & Recycling Centers. Residents can take up to four passenger tires.

### Batteries

Household batteries (AA, AAA, C, D and 9 volt) can be recycled at Batteries Plus located at 2215 North Cherry Road.



**RECYCLE IT!**



**4.5**  
MILLION  
WASTE TIRES ARE  
GENERATED EACH YEAR  
IN SOUTH CAROLINA.

**10**  
GALLONS  
OF OIL ARE NEEDED  
TO PRODUCE EVERY  
CAR TIRE.

**36**  
PERCENT  
OF USED TIRES IN  
THE UNITED STATES  
ARE RECYCLED.

**Note:** Electronics and tires that are left at the curb will be picked up for a fee and charged to the resident's utility bill.

Never throw used oil in the trash, dump it on the ground or into a lake, river, sewer, storm drain or septic tank. One gallon of used motor oil disposed of improperly, can pollute a million gallons of drinking water -- enough to supply 50 people for a year.

# Benefits of BACKYARD COMPOSTING



- Enriches soil, retains moisture, suppresses plant diseases
- Reduces the need for chemical fertilizers
- Reduces methane emissions from landfills



Compost is organic material that can be added to soil to help plants grow. Food scraps and yard trimmings make up 20 to 30 percent of what we throw away and can be composted instead. Keeping these materials out of landfills saves space and reduces methane, a potent greenhouse gas.



Composting requires three basic ingredients.

## **Browns**

This includes materials such as dead leaves, branches and twigs.

## **Greens**

This includes materials such as grass clippings, vegetable waste, fruit scraps and coffee grounds.

## **Water**

Having the right amount of water, greens and browns is important for compost development.



A compost pile should have an equal amount of browns to greens. Alternate layers of organic materials of different-sized particles. The brown materials provide carbon for your compost, the green materials provide nitrogen, and the water provides moisture to help break down the organic matter.

## HOW TO COMPOST

Select a dry, shady spot near a water source for your compost pile or bin.

Add brown and green materials as they are collected, making sure larger pieces are chopped or shredded. Moisten dry materials as they are added.

Once your compost pile is established, mix grass clippings and green waste into the pile and bury fruit and vegetable waste under 10 inches of compost material.

When the material at the bottom is dark and rich in color, your compost is ready to use. This can take anywhere from a couple months to two years.

## GRASSCYCLING

Grasscycling is a simple method to recycle yard waste. Mow your lawn so that grass is never more than 2 to 3 inches tall, leave the grass clippings where they fall and allow them to decompose.

To foster healthy grass, do not cut more than one-third of the grass blade, and no more than 1 inch total. Clippings return nutrients to your yard and you save time and money by not bagging or hauling them away. Grass clippings also make excellent mulch.

For more information:

[scdhec.gov/compost](http://scdhec.gov/compost)

[epa.gov/composting/grassmulch.htm](http://epa.gov/composting/grassmulch.htm)



Contrary to popular belief, grass clippings do not cause thatch.

Thatch is actually a layer of organic material made up of grass roots, not mown grass blades.

Grass clippings are about 90 percent water, so they decompose very quickly.



## Competitively priced COMMERCIAL GARBAGE AND RECYCLING SERVICE

The City of Rock Hill has provided commercial customers with quality waste management service for more than 30 years. Each month, the City collects garbage and recyclables from more than 1,200 businesses and industries.

The City offers a variety of solid waste and recycling services to meet specific needs. A dumpster container service is offered for commercial, industrial and multi-family residential collections. Corrugated cardboard, plastics, and office paper recycling are available. Roll cart services are available for small businesses.



The Dial-A-Dumpster program provides businesses and residents with dumpster rentals available for cleanouts, construction/demolition debris and roofing shingles.

Dial-A-Dumpster service is available for \$90 each time the container is emptied. An additional \$90 rental fee will apply if the container is not emptied within 30 days of delivery.

---

AVAILABLE MONDAY - SATURDAY

---

LOCAL CREWS PROVIDE QUICK RESPONSE

---

COMPETITIVE PRICING

---

SOLUTIONS FOR ALL BUSINESSES

---



Is your business open to recycling?  
It's free and easy for City customers!

Commercial garbage and recycling service is available Monday through Saturday weekly with limited services operating on Thanksgiving and Christmas.

Corrugated cardboard, paper and commingled recycling services are available at no charge with City of Rock Hill garbage service. Corrugated cardboard recycling service is available for \$60 a month if using private garbage collection.



---

For commercial garbage, Dial-A-Dumpster services and recycling services contact the Commercial Sanitation Supervisor, at 803-329-5609.



**City of Rock Hill**  
**155 Johnston Street**  
**P.O. Box 11706**  
**Rock Hill, SC 29731-1706**

[cityofrockhill.com/publicworks](http://cityofrockhill.com/publicworks)

Customer Service: **803-325-2500**

Report a missed roll cart, order a new roll cart,  
YardCart or recycle bin: **803-325-2500**

Commercial Sanitation: **803-329-5609**



**ROCK HILL**  
SOUTH CAROLINA

*Always on.*

FUNDED BY

