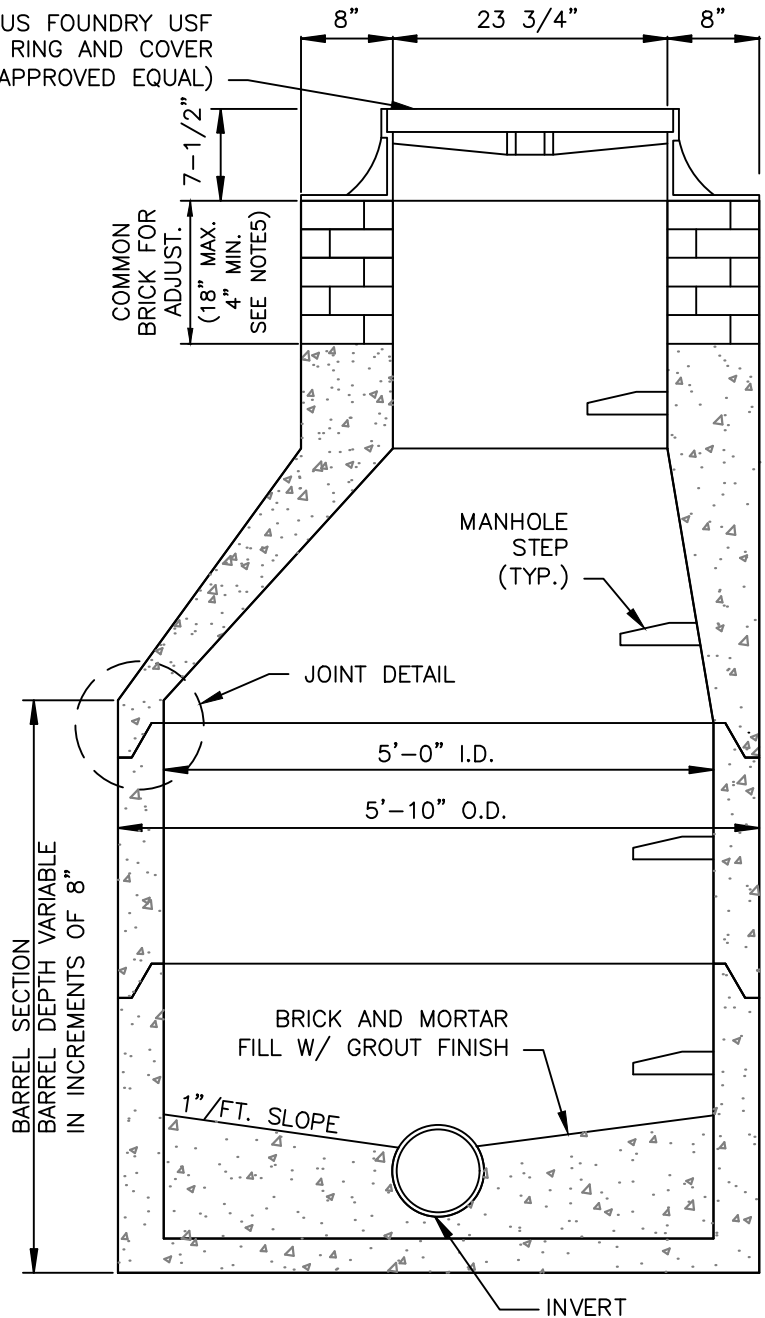
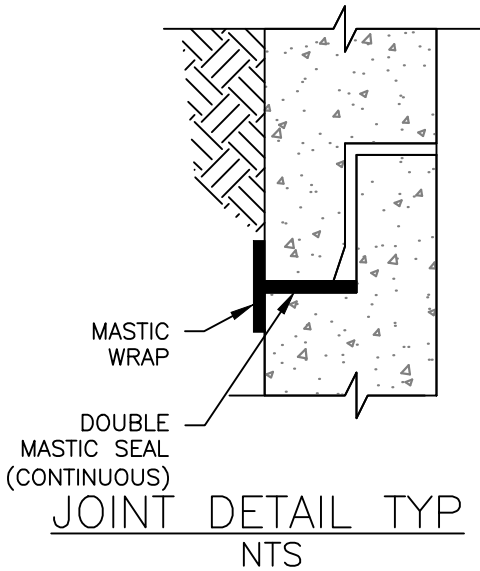


MH FRAME & COVER US FOUNDRY USF
 669 DL ROCK HILL RING AND COVER
 (OR APPROVED EQUAL)



SECTION
 NTS

NOTES

1. MANHOLE WALLS, TRANSITION SLABS, CONES, TOPS, AND BASE SECTIONS ARE TO MEET OR EXCEED THE REQUIREMENTS OF ASTM C478.
2. RESILIENT PIPE CONNECTORS ARE TO BE BOOTS CONFORMING TO ASTM C923.
3. MANHOLES TO BE COATED AS SPECIFIED.
4. BRICK OR CONCRETE ADJUSTMENT RINGS TO BE 4" MINIMUM WHEN MANHOLE IS LOCATED IN STREET RIGHT-OF-WAY OR PAVED AREA.
5. ALL SURFACES SHALL BE SMOOTH, EVEN TEXTURED WITH A MINIMUM OF HONEYCOMB, FINS, AND OTHER IMPERFECTIONS.
6. LIFTING HOLES SHALL BE PLUGGED W/ EXPANSION GROUT FROM OUTSIDE PRIOR TO BACKFILLING.
7. ALL MASONRY MORTAR SHALL BE PORTLAND CEMENT 1:3 MIX.

CITY OF ROCK HILL
 UTILITIES DEPARTMENT
 757 S. ANDERSON ROAD
 ROCK HILL, SC 29730



STANDARD DETAIL

PRE-CAST MANHOLE, 5' DIA.

REVISIONS:	DATE:	FILE NAME
	FEB. 2018	
	SCALE:	14.02
	N.T.S.	