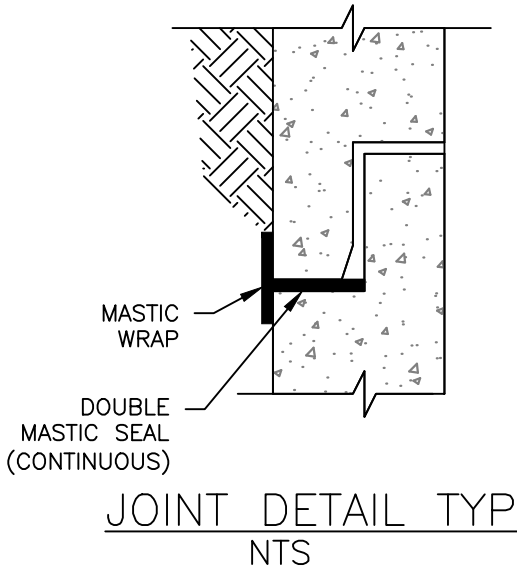
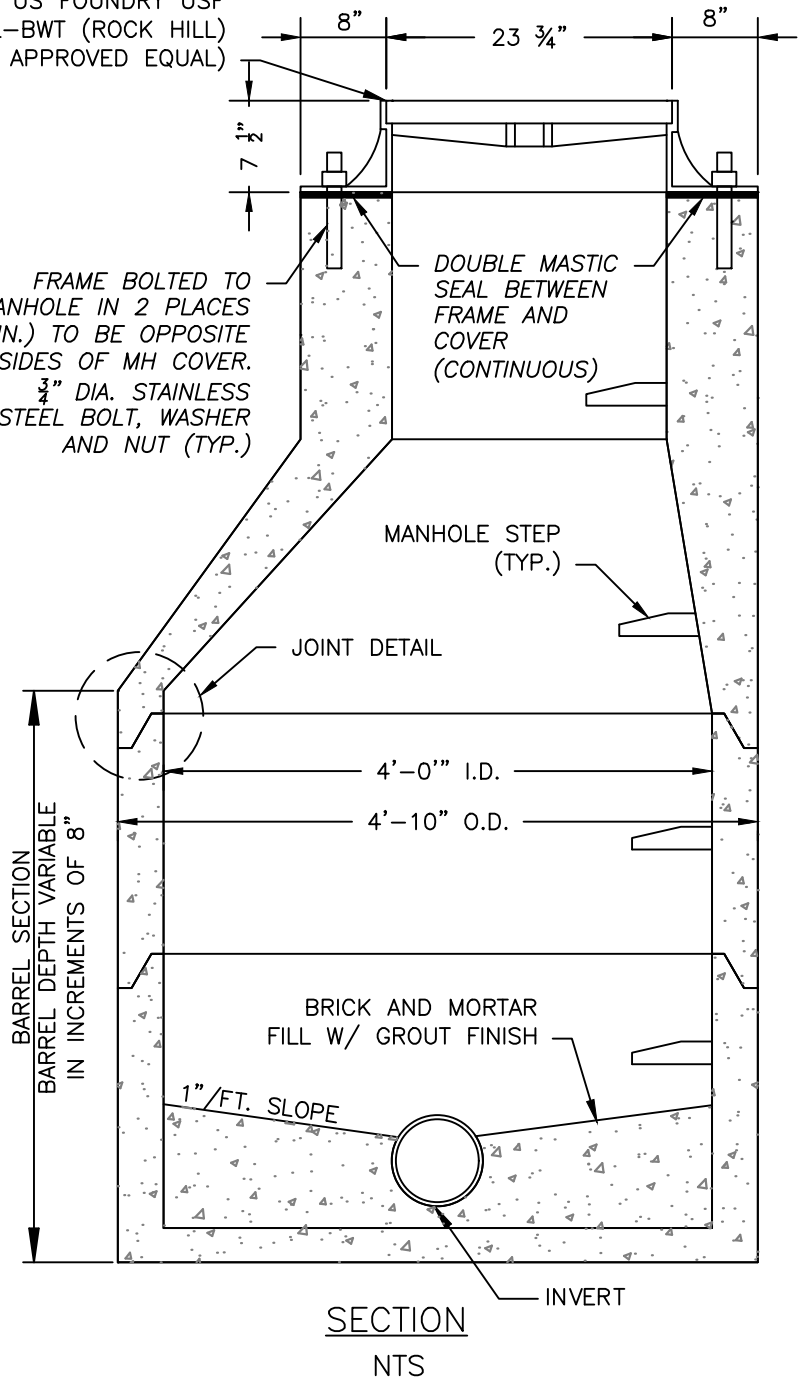


MH FRAME & COVER US FOUNDRY USF
 699 FRAME AND DL-BWT (ROCK HILL)
 COVER (OR APPROVED EQUAL)



FRAME BOLTED TO MANHOLE IN 2 PLACES (MIN.) TO BE OPPOSITE SIDES OF MH COVER.
 $\frac{3}{4}$ " DIA. STAINLESS STEEL BOLT, WASHER AND NUT (TYP.)



BARREL SECTION
 BARREL DEPTH VARIABLE
 IN INCREMENTS OF 8"

NOTES

- MANHOLE WALLS, TRANSITION SLABS, CONES, TOPS, AND BASE SECTIONS ARE TO MEET OR EXCEED THE REQUIREMENTS OF ASTM C478.
- RESILIENT PIPE CONNECTORS ARE TO BE BOOTS CONFORMING TO ASTM C923.
- MANHOLES TO BE COATED AS SPECIFIED.
- BRICK OR CONCRETE ADJUSTMENT RINGS TO BE 4" MINIMUM WHEN MANHOLE IS LOCATED IN STREET RIGHT-OF-WAY OR PAVED AREA.
- ALL SURFACES SHALL BE SMOOTH, EVEN TEXTURED WITH A MINIMUM OF HONEYCOMB, FINS, AND OTHER IMPERFECTIONS.
- LIFTING HOLES SHALL BE PLUGGED W/ EXPANSION GROUT FROM OUTSIDE PRIOR TO BACKFILLING.
- ALL MASONRY MORTAR SHALL BE PORTLAND CEMENT 1:3 MIX.

CITY OF ROCK HILL UTILITIES DEPARTMENT 757 S. ANDERSON ROAD ROCK HILL, SC 29730		STANDARD DETAIL		
		PRECAST MANHOLE WITH BOLT-DOWN WATER-TIGHT COVER, 4' DIA.		
		REVISIONS:	DATE:	FILE NAME
			FEB. 2018	14.03
	SCALE:	N.T.S.		