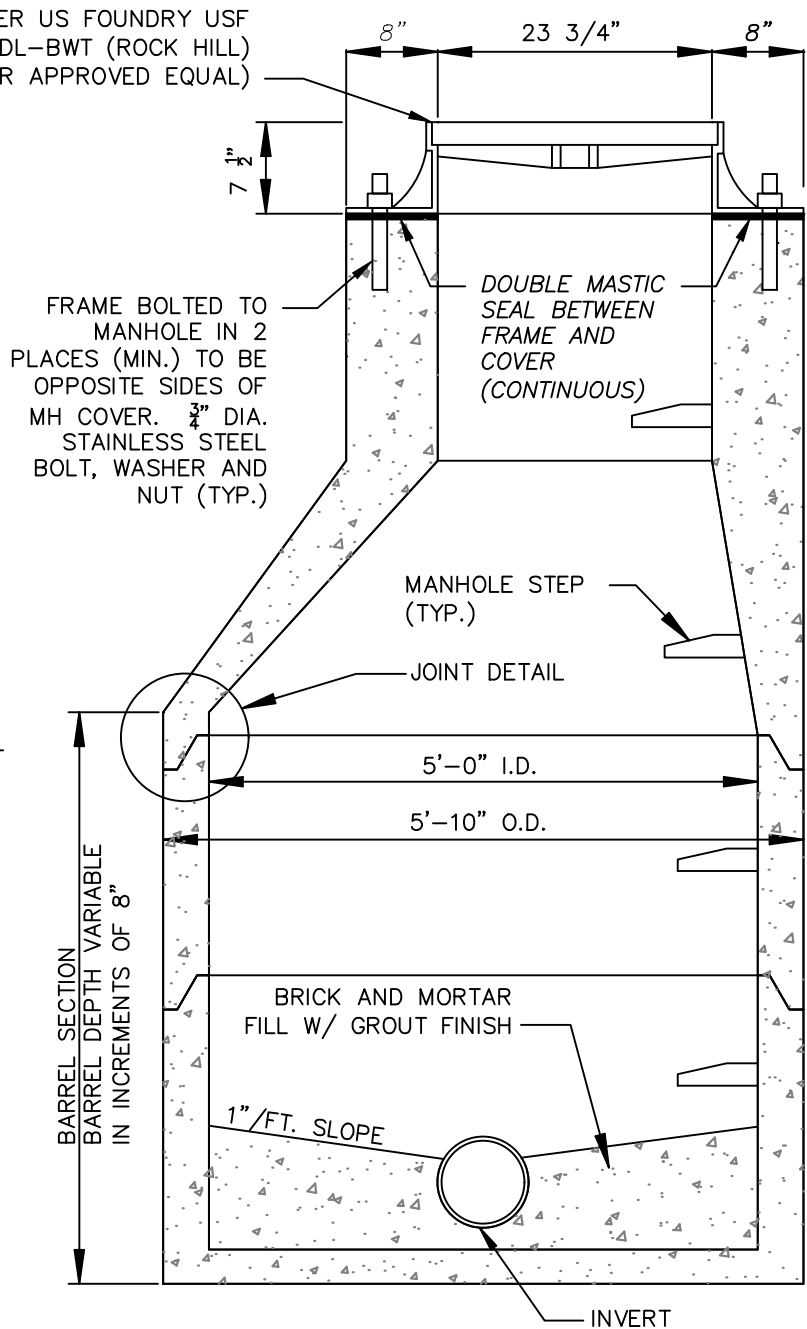
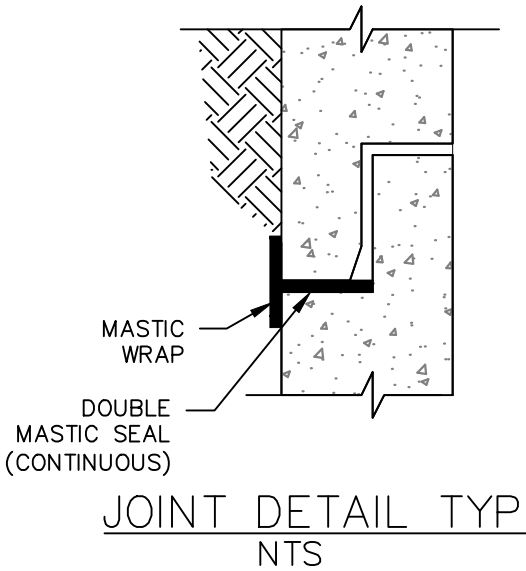


MH FRAME & COVER US FOUNDRY USF  
 699 FRAME AND DL-BWT (ROCK HILL)  
 COVER (OR APPROVED EQUAL)



SECTION NTS

NOTES

1. MANHOLE WALLS, TRANSITION SLABS, CONES, TOPS, AND BASE SECTIONS ARE TO MEET OR EXCEED THE REQUIREMENTS OF ASTM C478.
2. RESILIENT PIPE CONNECTORS ARE TO BE BOOTS CONFORMING TO ASTM C923.
3. MANHOLES TO BE COATED AS SPECIFIED.
4. BRICK OR CONCRETE ADJUSTMENT RINGS TO BE 4" MINIMUM WHEN MANHOLE IS LOCATED IN STREET RIGHT-OF-WAY OR PAVED AREA.
5. ALL SURFACES SHALL BE SMOOTH, EVEN TEXTURED WITH A MINIMUM OF HONEYCOMB, FINS, AND OTHER IMPERFECTIONS.
6. LIFTING HOLES SHALL BE PLUGGED WITH EXPANSION GROUT FROM OUTSIDE PRIOR TO BACKFILLING.
7. ALL MASONRY MORTAR SHALL BE PORTLAND CEMENT 1:3 MIX.

CITY OF ROCK HILL  
 UTILITIES DEPARTMENT  
 757 S. ANDERSON ROAD  
 ROCK HILL, SC 29730



STANDARD DETAIL

PRECAST MANHOLE WITH BOLT-DOWN WATER-TIGHT COVER, 5' DIA.

REVISIONS:	DATE:	FILE NAME
	FEB. 2018	
	SCALE:	14.04
	N.T.S.	